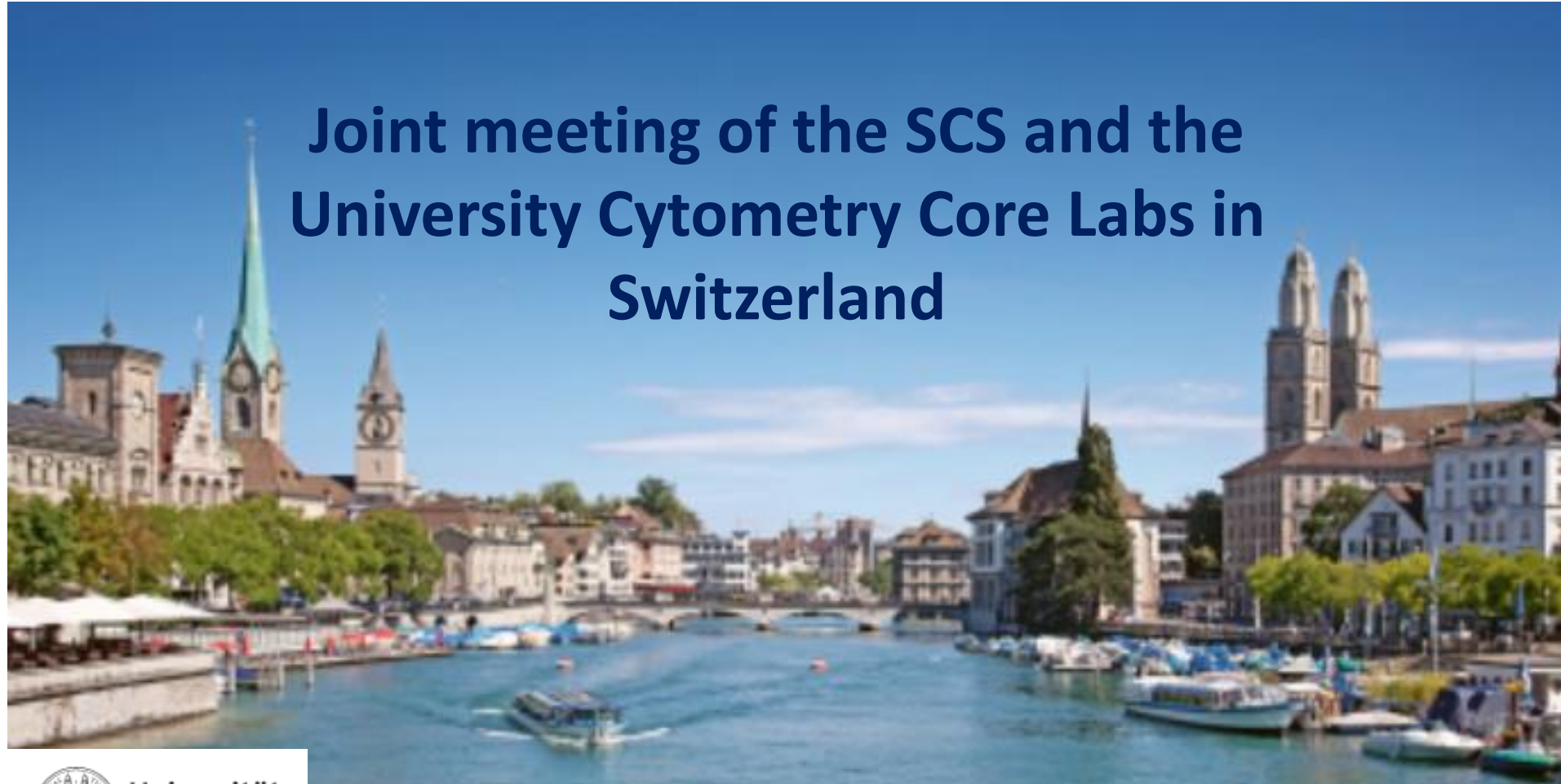


Swiss Cytometry Spring Meeting February 1-3 2023, Zurich



Joint meeting of the SCS and the
University Cytometry Core Labs in
Switzerland



Meeting Program

Wednesday, February 1st

9.30 am -10.00am: Registration

10.00 am – 12.30 am: Workshop on novel software solutions for MRD and more

- 10.00am – 10.15am: Introductory talk on Kaluza and R plugin
- 10.15am – 10.30am: Introductory talk on Metaflow (Metafora Biosystems)
- 10.30am – 12.30am: Parallel Workshop in two groups: Hands on gating of prepared MRD cases

12.30 am – 1.30pm: Lunch break and late registrations

1.30pm – 2.15pm: ELN AML MRD guidelines (plenary talk): Summary and Discussion (Marie-Christine Bene)

2pm – 2.10pm: Welcome Session (Claudia Dumrese and Jan Dirks)

2.15pm – 3.15 pm: Discussion of the AML MRD sendout

3.15pm – 4.15pm: SCS General assembly

4.15pm – 5pm: Coffe break + Commercial Exhibition

5.00pm – 7pm: Scientific programm

7pm: Apero and Poster Tour

Meeting Program

Thursday, February 2nd

08.30 - 10.20am : Best of ESCCA session: chaired by Paula Fernandez

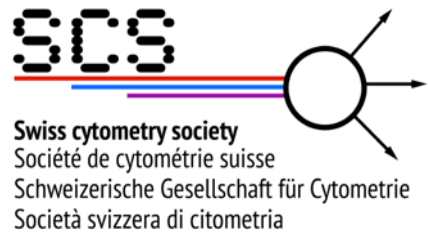
- 8.30am – 8.40am: Welcome and ESCCA news (Paula Fernandez, Aarau)
- 8.40am – 9.00am: ESCCA bits and pieces (Paula Fernandez, Aarau)
- 9.00 – 9.20am: Spectral flow cytometry enters the diagnostic lab (Cassandra Hogan, Geneva)
- 9.20 – 9.40am: New software solutions combining clustering analysis and traditional gating (Jean-Francois Mayol, Lausanne)
- 9.40 – 10.00am: Novel markers and strategies in B-ALL MRD (Ewa Dudkiewicz, Zurich)
- 10.00 – 10.20am: New IVD-R regulations – how to prepare your diagnostic lab? (Jan Dirks, Basel)

10.20 am – 11.00am: Coffe Break + Commerical Exhibition

11.00am – 12.00am: Keynote Lecture: AML MRD - State of the art and how we might do it in future (Marie-Christine Bene)

Afternoon: Scientific program

6.30pm: Apero with local beers followed by Conference Dinner (Turbinenbräu, Zürich)



Meeting Program



Friday, February 3rd

- **9am – 1pm: Scientific program**
- **1pm – 2pm: Wrap up – End of conference**